

gizmo

THE TETRA SOCIETY OF NORTH AMERICA: CUSTOM ASSISTIVE DEVICES

Harry Spink via Unsplash



Tetra in Quebec!

Funding from the Craig H. Neilsen Foundation is put towards Tetra establishing a chapter in the province of Quebec

We are thrilled to share that we are launching a new Tetra chapter in Quebec!

The development of this chapter marks an important step in allowing us to serve even more individuals and communities to live independent and fulfilling lives across Canada.

Over the past few months, we've been hard at work reviewing our web presence, marketing materials and processes.

To support our new chapter, we are excited to announce the upcoming launch of a French-language website. This will help us better serve our Francophone community, making it easier for volunteers, clients and partners to access resources and connect with us.

We've been fortunate that many people that we've met so far seem interested in supporting Tetra's mission. As we lay the groundwork for this chapter, we need your help to make it a success!

Are you or someone you know based in Quebec and passionate about making a difference? We are seeking individuals to get involved as volunteers, regional coordinators or supporters.

Your connections—whether to clients, local partnerships, skilled volunteers—or even interested supporters—can play a vital role in building a strong foundation for the Quebec chapter.

If you're interested or know someone who might be, please reach out to us!

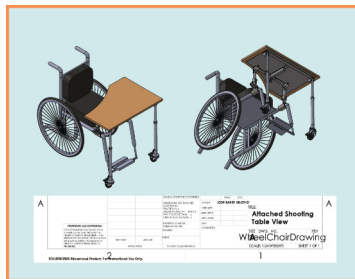
Together, we can continue creating innovative solutions that make life more accessible for everyone.

TetraCon 2025

February 27, 2025
10 AM - 2 PM PT
Live on Zoom



Join the Tetra Society of North America's national community at the 5th annual virtual TetraCon on February 27th!



Learn more at TetraSociety.org



Presenters Include:



Ean Price
Technology For Independent Living
Tetra Society Board Member



Dr. Leonard Lye
Tetra Chapter Coordinator
Newfoundland



Tetra Society, No Limits, Endless Possibilities

Meet Our New Pacific Regional Coordinator



I'm thrilled to announce that I've been appointed as the new Pacific Regional Coordinator for the Tetra Society! My name is Sheryl Rose Newman, and in addition to my new role, I'm also the Volunteer Management Coordinator for the Disability Foundation Network, a position I've proudly held for the past four years. Serving in both roles allows me to bridge our incredible volunteers with Tetra clients who need our services, creating an impact where it matters most.

A bit about me: I'm a proud mother of two teenage boys and have been married for 18 years. I know firsthand the balancing act of wearing multiple hats—managing a household and juggling multiple responsibilities. But I'm confident that I can effectively manage my roles and make a significant contribution to the Tetra Society.

If you or anyone you know has a background in engineering, design, or simply the ability to customize devices and wants to make a real difference, I invite you to join us at the Tetra Society. Let's spread the word and connect with talented individuals who can bring meaningful change to the lives of those with disabilities.

Looking forward to this exciting journey together!

Winnipeg Ramp Project

In the spring of 2024, the Winnipeg Chapter of Tetra partnered with Habitat for Humanity on the construction of a ramp for a client.

The client originally submitted the request because she had three steps to enter the home and was unable to access her home until she had a ramp in place.

Our volunteer, Konstantin Zhrebilo, worked with Habitat to design the ramp and apply for the permit from the City of Winnipeg; Habitat's contractor also worked on the build of the ramp with Konstantin.

Due to the scope of this project, the Chapter would not have been able to take it on without both the expertise and support of Habitat for Humanity.

The ramp was completed in July 2024 and the client is now able to access her home independently thanks to this collaboration.



Pictured from left to right: Rivaldeep Dhillon, Ervin Paul and Konstantin Zhrebilo



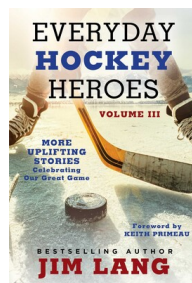
If the Glove Fits, Wear It

Carter Burton lives in King's Point, Newfoundland. He loves hockey but his left-hand fingers curl in such a way that he can't get them into a normal hockey glove. Carter has hemiplegic cerebral palsy, which affects his left hand. When Carter was eleven years old, his occupational therapist reached out to Dr. Leonard Lye, coordinator of the Tetra Society's St. Johns Chapter, for help.

Describing the project, Dr. Lye says, "At home, I studied the materials and components. I took a glove apart and saw exactly how they were put together. Before long, I had a plan of what to cut out and what to sew together to make a 'mitten' hockey glove for Carter's left hand."

Describing the process of assembling the hockey glove, Dr. Lye revealed: "using a suitable needle and "thread" (dental floss worked best), I unstitched the glove, cut out the connecting material for the fingers, then sewed it back up to create the mitten. CBC did a story about him and how the glove allowed him to play hockey with his friends. In the story, Carter says to me: 'Now I have the opportunity to play hockey thanks to you.'"

Leonard has gone on to make 3 more gloves. The new book by Jim Lang, *Everyday Hockey Heroes, Volume III*, has a chapter titled "The Unlikely Hero: Leonard Lye". "To me," said Leonard in the book. "What I do isn't anything special. This is what we do at the Tetra Society."



Jim Lang
Everyday Hockey Heroes,
Volume III
Simon & Schuster
November 2024

March of the Dimes

A new 2024 partnership for the Tetra Society—The March of Dimes decided to close down their DesignAbility program this year, and chose Tetra as the organization to partner with, in order to give their clients an organization where they could request a custom assistive device to give them greater independence in their life, and for their volunteers to have an opportunity to continue volunteering, designing and building these devices.

Some of the volunteers have already been building devices at Tetra—Andy Van Driel and Mark Ewer in the Hamilton/Halton/Niagara chapter, and John Hodge in the York Region chapter. These volunteers continue to give of their time and skills to assist those in the community that could not afford to hire someone to build these unique 'gizmos.'

The MOD is also forwarding new clients to the Tetra Society as any requests for devices come into their organization. The partnership is going well, and anyone may directly request a custom assistive device through this link: <https://tetrasociety.org/assistance/>.



Tetra Society
of North America

Tetra is a registered charity that enables people with disabilities to overcome barriers in the physical landscape. We recruit technically skilled and compassionate volunteers who work one-on-one with individuals requiring custom engineering solutions. The completed gizmos empower people with disabilities to live independent and active lives.

TETRA THANKS

Affinity Credit Union • Armstrong Family Foundation • Brampton and Caledon Community Foundation • Calgary Foundation • Catherine and Maxwell Meighen Foundation • Community Links Association • Craig H. Neilsen Foundation • Davies Charitable Foundation • Employment and Social Development Canada • Fable Tech Labs • Gaming Policy and Enforcement Branch • George Lunan Foundation • Gibson Energy • Guelph Community Foundation • Halton Region Community Investment Fund • Hamilton Community Foundation • Harold E. Ballard Foundation • Harry P. Ward Foundation • J.P. Bickell Foundation • Jack and Barbara Hay Foundation • Minto Foundation Inc. • New Brunswick Children's Foundation • Ottawa Community Foundation • Provincial Health Services Authority • Sasktel • SurreyCares Community Foundation • The Marion Ethel Kamm and Frederick John Kamm Foundation

National and Central Region Coordinator

Sylvia Baliko | SBaliko@Tetrasociety.org | 289-208-2315

Program Manager & Pacific Region Coordinator

Sheryl Rose Newman
pacificregion@tetrasociety.org
236-513-6453

Fraser Valley, BC
Sheryl Rose Newman
pacificregion@tetrasociety.org

Armstrong, BC
Sheryl Rose Newman
pacificregion@tetrasociety.org

Cranbrook/East Kootenay, BC
Sheryl Rose Newman
pacificregion@tetrasociety.org

Creston, BC
Andre Hebert
CrestonBC@Tetrasociety.org

Fort St. John, BC
Sheryl Rose Newman
pacificregion@tetrasociety.org

Kamloops, BC
Sheryl Rose Newman
pacificregion@tetrasociety.org

Kelowna, BC
Cathy Grover
KelownaBC@Tetrasociety.org

Nanaimo, BC
Sheryl Rose Newman
pacificregion@tetrasociety.org

Prince George, BC
Nadine Lindstorm
PrinceGeorgeBC@Tetrasociety.org

Salt Spring Island, BC
SaltSpringBC@Tetrasociety.org

Surrey/Langley/Delta, BC
Sheryl Rose Newman
pacificregion@tetrasociety.org

Trail/Castlegar, BC
Sheryl Rose Newman
pacificregion@tetrasociety.org

Vancouver, BC
Eric Molendyk
eric@tetrasociety.org

Prairie Region Coordinator

Crystal Leochko Johnston
crystal@tetrasociety.org
204-998-2551

Vernon, BC
VernonBC@Tetrasociety.org

Victoria, BC
Sheryl Rose Newman
pacificregion@tetrasociety.org

Edmonton, AB
Crystal Chalmers
EdmontonAB@tetrasociety.org

Lethbridge, AB
Daniela Aguilar
LethbridgeAB@Tetrasociety.org

Medicine Hat, AB
Crystal Leochko Johnston
Crystal@Tetrasociety.org

Red Deer, AB
Crystal Leochko Johnston
Crystal@Tetrasociety.org

Regina, SK
Terri Sleeva
ReginaSK@Tetrasociety.org

Saskatoon, SK
Jean Price
Saskatoonsk@tetrasociety.org

Winnipeg, MB
Sarah Sae Yanagi
WinnipegMB@Tetrasociety.org

Guelph, ON
Roheed Sahak
GuelphON@Tetrasociety.org

Hamilton-Halton, ON
Nancy Thieme
HamiltonHaltonON@Tetrasociety.org

Kingston, ON
Cara Gooding
KingstonON@Tetrasociety.org

London, ON
Mayur Gharpodes
LondonON@Tetrasociety.org

Atlantic Region Coordinator

Steve Trussoni
AtlanticRegion@Tetrasociety.org
902-477-2664

Thunder Bay, ON
Gerdi Islinger
ThunderBayON@tetrasociety.org

Ottawa, ON
Paul Marriage
OttawaON@Tetrasociety.org

Peel Region, ON
Scott Capper
PeelRegionON@Tetrasociety.org

Metro Toronto, ON
Paul Fraser
MetroTorontoON@tetrasociety.org

York Region, ON
Gerdi Islinger
YorkRegionON@tetrasociety.org

Trenton, ON
Sylvia Baliko
SBaliko@Tetrasociety.org

Windsor, ON
Dave Harshaw
WindsorON@Tetrasociety.org

Montréal, QC
Sylvia Baliko
SBaliko@Tetrasociety.org

Fredericton, NB
Peter McKelvey
FrederictonNB@Tetrasociety.org

Halifax, NS
Vartika Thakur
HalifaxNS@tetrasociety.org

St. John's, NL
Dr. Leonard Lye
StJohnsNL@Tetrasociety.org

For inquires regarding Tetra projects in the U.S., please contact Program Manager Eric Molendyk at 1-877-688-6762.

TETRA SOCIETY OF NORTH AMERICA

Dedicated to assisting people with disabilities to achieve an independent and fulfilling life, one assistive device at a time

**Have an idea for a project? Want to know what's possible?
Want to overcome a barrier?**

Here's how to reach us:

T: 1-877-688-8762
F: 604-688-6463
E: info@tetrasociety.org
www.TetraSociety.Org

Tetra Society of North America
Suite 110 – 2285 Clark Drive,
Vancouver, BC, V5N 3G9
Charity #14043 5108 RR0001

